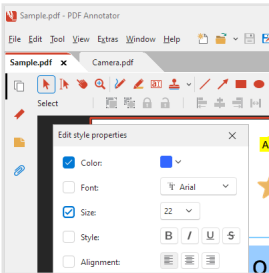


What's New in



PDF Annotator 10

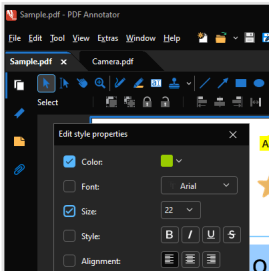
Click “Help”, “New in PDF Annotator 10” to access this document again.



New! New Look: We have completely redesigned the look of PDF Annotator and adapted it to Windows 11.

The main menu and toolbar now share a single line. In the settings, you'll find an option for the familiar two-line display.

Icons are now vector-based and are therefore displayed with full sharpness at any size and resolution.



Colors have been harmonized in Dark Mode.

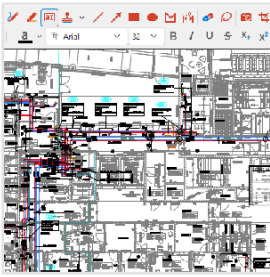
More spacing results in a clear, uncluttered image. The “Compact View” (under “View, Toolbars”) reduces spacing.

All dialog windows have been modernized and redesigned. Some dialog windows can now be resized, for example, to enlarge previews.



New! Improved Support for Multiple Monitors (DPI)

PDF Annotator windows can now be easily moved between monitors running with different DPI settings. It no longer matters which DPI setting the program was started with.



New! Accelerated Display & Smooth Operation

The display of complex PDF documents has been moved to the background, so that the application always remains smooth.

When scrolling and zooming, the application is no longer blocked while waiting for complex documents to be displayed.

Even with longer tasks that display a progress window, the application always remains responsive, and the task can be easily canceled.

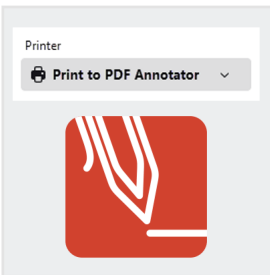
The display of preview images in the “Annotations” tab has been extensively improved and accelerated.



New! Improved PDF Creation

Whenever possible, annotations created in PDF Annotator are now stored in the PDF using vector format, which leads to a significantly improved, sharper display of PDF documents in PDF viewers and programs from other vendors.

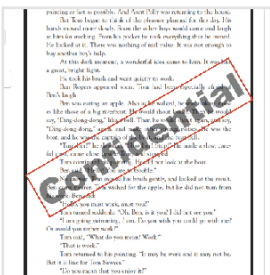
This means that text in text annotations can now, in most cases, be searched, highlighted, and copied in other PDF programs.



New! New “Print to PDF Annotator” Driver

The new version of the virtual printer driver is now fully Windows 11-compatible and Windows 11-certified.

Please note that this step was urgently required. However, the range of functions and the display of printer properties of the new printer differ from the old printer, and some printer functions are no longer available.



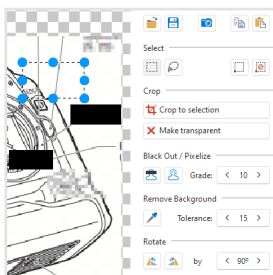
New! Headers and Footers, Watermarks

Under “Edit, Document,” you can now define headers and footers that should appear on all pages (or ranges of pages).

In the same way, you can define watermarks, text that appears centered on every page.

Define as many headers/footers or watermarks as you like and select the font properties and desired positioning for each text.

Watermarks can also be displayed as rotated text and expanded to fit the maximum page width.

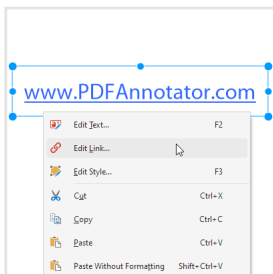


New! Improved Integrated Image Editor

The image editor has been completely redesigned. Performance when using the camera has been improved.

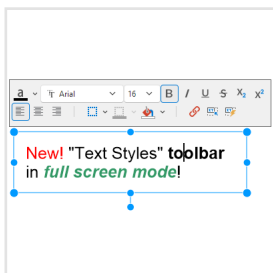
A new black-out function for redacting content in images, similar to the existing pixelation function, is now available.

New selection functions have been added.



New! "Edit Link" Command

Links created with the Text tool can now be edited directly by right-clicking and selecting "Edit Link...".

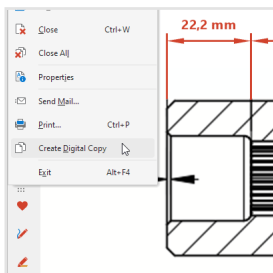


New! "Text Styles" Toolbar in Full-Screen

When editing text annotations in full screen, a new toolbar now appears directly above the text being edited, containing all text properties.

This feature can be disabled via the context menu during text editing.

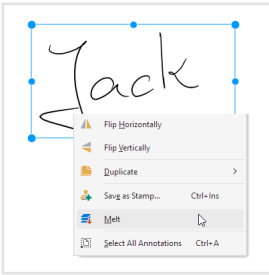
This feature is also available in regular mode if the toolbars above the document have been disabled.



New! "Digital Copy" Feature

As before, the option to create a digital copy is offered when opening documents with restrictions defined by the author.

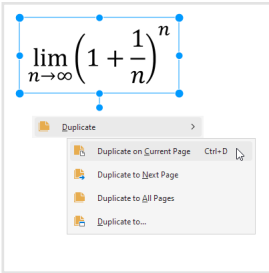
A digital copy of any document can now also be created at any time using the new command in the "File" menu.



New! Melting Selected Annotations

Under “Edit, Selection,” you can now selectively melt one or more selected annotations.

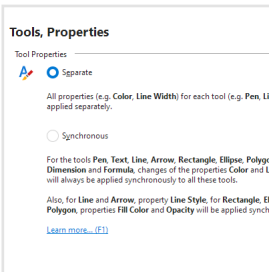
Melted annotations can no longer be changed.



New! Duplicating Annotations

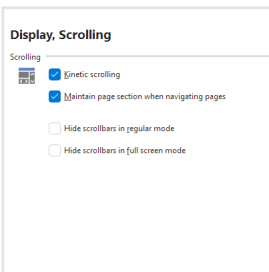
In addition to duplicating to the next page and to all pages, “Edit, Selection, Duplicate” now also offers the following commands:

- ▶ Duplicate on current page (Ctrl+D)
- ▶ Duplicate on... (for entering page numbers or page ranges)



New! Synchronized Tool Properties

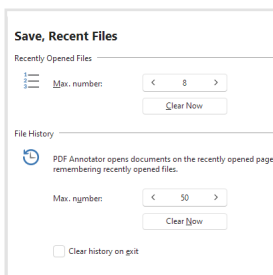
In the settings under “Tools, Properties,” you can specify that certain properties, e.g., colors and line widths, should be applied to all tools - not just the active tool - when changed.



New! Maintain Page Section when Navigating Pages

In the settings under “Display, Scrolling” there is now an option to maintain the page position when moving from page to page.

Disable this option if you prefer to move to the top left corner of the page when changing pages.

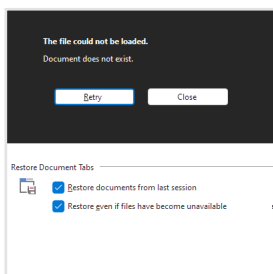


New! Configurable File History (Recently Used Files)

In the settings under “Save, Recent Files,” you can now adjust the number of recently used files.

By selecting a number of zero, you can deactivate the file history.

To protect your personal data, the lists of these file names can also be deleted at any time.



New! Delayed Restoration of Recent Documents

When using the “Restore document tabs from last session” option, the documents are now only loaded when the tab is clicked.

Activate the new “Restore even if files are no longer available” option to restore a tab even for documents that are no longer available.

This allows you to, for example, first reconnect a network drive so that the files are available.

AND MORE!

- ▶ When printing a list of all annotations via the “Annotations” tab, the totals of the annotations on each page, as well as a grand total, are now also printed.
- ▶ In all input fields for page ranges, you can now enter “odd” or “even” to apply the respective function only to the corresponding page range.
- ▶ When zooming with the mouse wheel, the document now remains centered under the current mouse pointer position.
- ▶ For text annotations, there are now keyboard shortcuts to decrease (Ctrl+8) or increase (Ctrl+9) the font size.
- ▶ In the “Settings” dialog, the settings for each page can now be reset to their default values using a button in the top right. Instead of the Quick Help on the right side of the dialog, a help page for the dialog can now be accessed via “Help” (bottom left, or F1).
- ▶ For new installations, the Tool Switch is initially disabled. The switch can be displayed in the settings under “Display, Tool Switch”.

See what was new in previous PDF Annotator versions, and find out more about specific features in our **Feature Spotlight** articles on:

www.PDFAnnotator.com/en/whatsnew